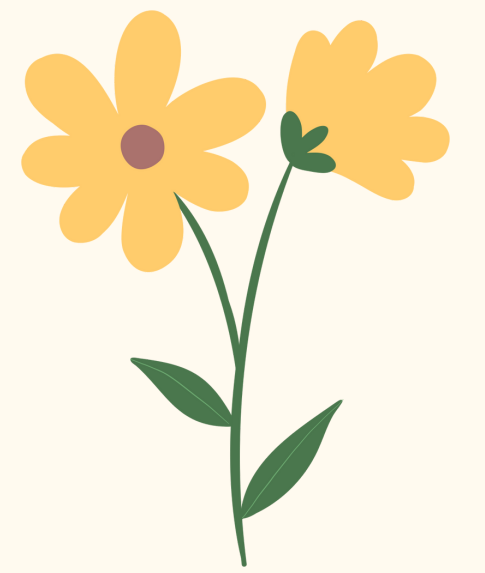


# Spring has Sprung!



LSPOA kindly reminds you,

Spring time is here and for most of us that means new landscaping and various ways of spring cleaning.

Many property owners have already started working on their yard and landscaping. Please make sure that any improvements **don't carry over into the Associations right-of-way**. Your property line ends at your front property pins. You **cannot** extend landscaping of any kind into the area beyond your property line.

Those that are cleaning out your garage, gutters, and yards, please remember to dispose of debris properly. If you are planning on renting a dumpster, remember to contact the administration office for details. We need to note your dumpster delivery and pick up dates. Remember to dispose of your trash promptly and properly so it doesn't become a violation.

Any new fence, dog run, or garden enclosure requires an application to be submitted and approved. Tree removals also require an application. Outbuildings / sheds are allowed, however, there are minimum requirements that must be followed. These guidelines can be found in the CC&Rs, section 5.1 and 5.4.

Before any work can be started, the CC&R compliance officer and Environmental Control Committee (ECC) must review and approve any applications received. If your request is denied, you can appeal the decision to the LSPOA board or submit a new application.

As the weather begins to warm up, please make sure to drive carefully and avoid hitting any golfers, children at play, dogs, cats, etc.. Drive carefully through your community.

If you have any questions please contact our compliance officer, Kari Moser, at (530) 938 - 3281 ext 102 or [lsपोacmpl@lakeshastina.com](mailto:lsपोacmpl@lakeshastina.com).

Office hours are Monday - Thursday 8am - 5pm

